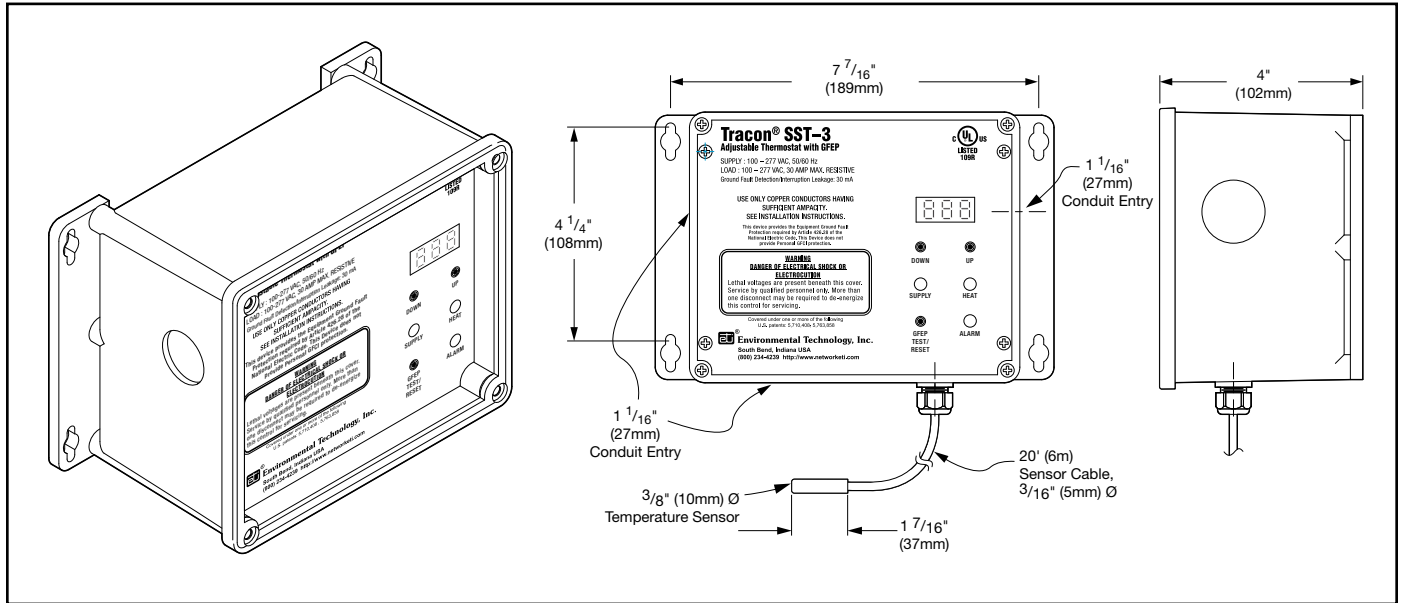


Electronic Thermostat with Ground Fault Equipment Protection

FEATURES & BENEFITS

- Adjustable set point, 34°F – 150°F (1°C – 65°C)
- Automatic supply voltage selection, 100 – 277 VAC
- Two-pole contactor switches up to 30 AMP heater loads
- Alarm relay with isolated contact
- Integral 30 mA GFEP
- C-UL-US listed
- Simple to install and operate
- Minimum energy costs



DESCRIPTION

The Tracon model SST-3 adjustable set point thermostat provides process temperature maintenance in cost-sensitive applications requiring ground fault equipment protection (GFEP). The SST-3 adjustable set point thermostat protects processes and equipment from damaging temperatures and/or viscosities by maintaining an adjustable temperature set point from 34°F to 150°F (1°C to 65°C). Typical applications include freeze protection, hot water temperature maintenance, and flow assurance/viscosity maintenance.

The SST-3 adjustable set point thermostat operates heaters at temperatures below the configured set point, and turns them off when the temperature rises 2°F (1°C) above the

set point. The adjustable temperature set point is configured via the front panel. The external temperature sensor (supplied) is a NEC Class 2 device rated for wet locations.

The SST-3 adjustable set point thermostat features a built-in 30 mA GFEP, digitally filtered to minimize false tripping. A ground fault must be manually reset with the TEST/RESET switch before heater operation can be resumed. The GFEP function is automatically tested along with the heaters whenever power is applied and once every 24 hours thereafter for additional safety. An optional operational mode allows the GFEP to alarm without disabling heater operation for use with critical fire protection systems.

The SST-3 adjustable set point thermostat includes an alarm relay

with an isolated SPDT 1 AMP contact. The alarm relay is reverse acting and is normally energized unless there is a ground fault condition, GFEP circuitry fails a test, when there is a bad temperature sensor, or when there is a low limit temperature condition.

The SST-3 adjustable set point thermostat operates from automatically selected operating voltages from 100 to 277 volts, single-phase. It controls heater loads of up to 30 amps. The temperature sensor is an NEC Class 2 device that can be located up to 2,000' (610m) away from the thermostat.

For complete information describing its application, installation and features, please contact Customer Service or check on the web at www.networketi.com.

SPECIFICATIONS

General

Area of use	Nonhazardous locations
Approvals	 Type 873 Temperature Regulating Equipment <small>Also evaluated by Underwriters Laboratories Inc® in accordance with UL 1053 Ground-Fault Sensing and Relaying Equipment</small>

Enclosure

Protection	NEMA 4X
Cover attachment	Polycarbonate cover, machine screws
Entries	1 × 3/4" entry (bottom right) for NEC Class 2 connections 3 × 1-1/16" entries (bottom left and left) for supply and load power
Material	Polycarbonate
Mounting	Wall mounted

Front Panel Interface

Status indicator	SUPPLY (green) power applied SUPPLY (green, flashing) bad thermistor HEAT (yellow) call for heat ALARM (red) ground fault condition ALARM (red, flashing) failed GFEP test ALARM (red, flashing, rapid) GFEP test in progress
------------------	--

Remote Interface

Alarm relay	Isolated SPDT 1 AMP Class 2 contact
Summary alarms	No Power Low Temperature Limit Ground Fault Condition GFEP function test failure Bad or missing Thermistor

Control

Supply voltage	100 – 277 volts, 50/60 Hz single phase (automatically selected)
Contact type	Two Form A DPST
Maximum ratings	Voltage: 277 VAC Current: 30 amps

Temperature Sensor

Set point	34°F – 150°F (1°C - 65°C)
Dead band	2°F (1°C)
Sensor type	Thermistor network
Circuit type	NEC Class 2
Lead length	Up to 2,000' (610m) using 12 AWG 2-wire jacketed cable Up to 500' (152m) using 18 AWG 2-wire jacketed cable

Ground Fault Equipment Protection (GFEP)

Set point	30 mA
Automatic self test	Mode A: Verifies GFEP function before contactors operate Mode B: Verifies GFEP function every 24 hours
Manual test/reset	TEST/RESET switch of front panel

Environmental

Operating temperature	Enclosure: –31°F to 130°F (–35°C to 55°C) Temperature Sensor: –40° to 300°F (–40° to 149°C)
Storage temperature	–67°F to 167°F (–55°C to 75°C)

ORDERING INFORMATION

Order Number	Description
24492	Model SST-3 Adjustable Set Point Thermostat
19272	Temperature Sensor (included)

LIMITED WARRANTY

ETI's two year limited warranty covering defects in workmanship and materials applies. Contact Customer Service for complete warranty information.

DISCLAIMER

Environmental Technology, Inc. makes no representations or warranties, either expressed or implied, with respect to the contents of this publication or the products that it describes, and **specifically disclaims any implied warranties of merchantability or fitness for any particular purpose**. Environmental Technology, Inc. reserves the right to revise this publication, and to make changes and improvements to the products described in this publication, without the obligation of Environmental Technology, Inc. to notify any person or organization of such revisions, changes or improvements.

The ETI logo and We Manage Heat are registered trademarks of Environmental Technology, Inc. SST is a trademark of Environmental Technology, Inc. Copyright © 2014 Environmental Technology, Inc. All rights reserved.